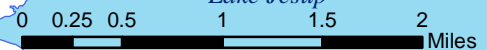
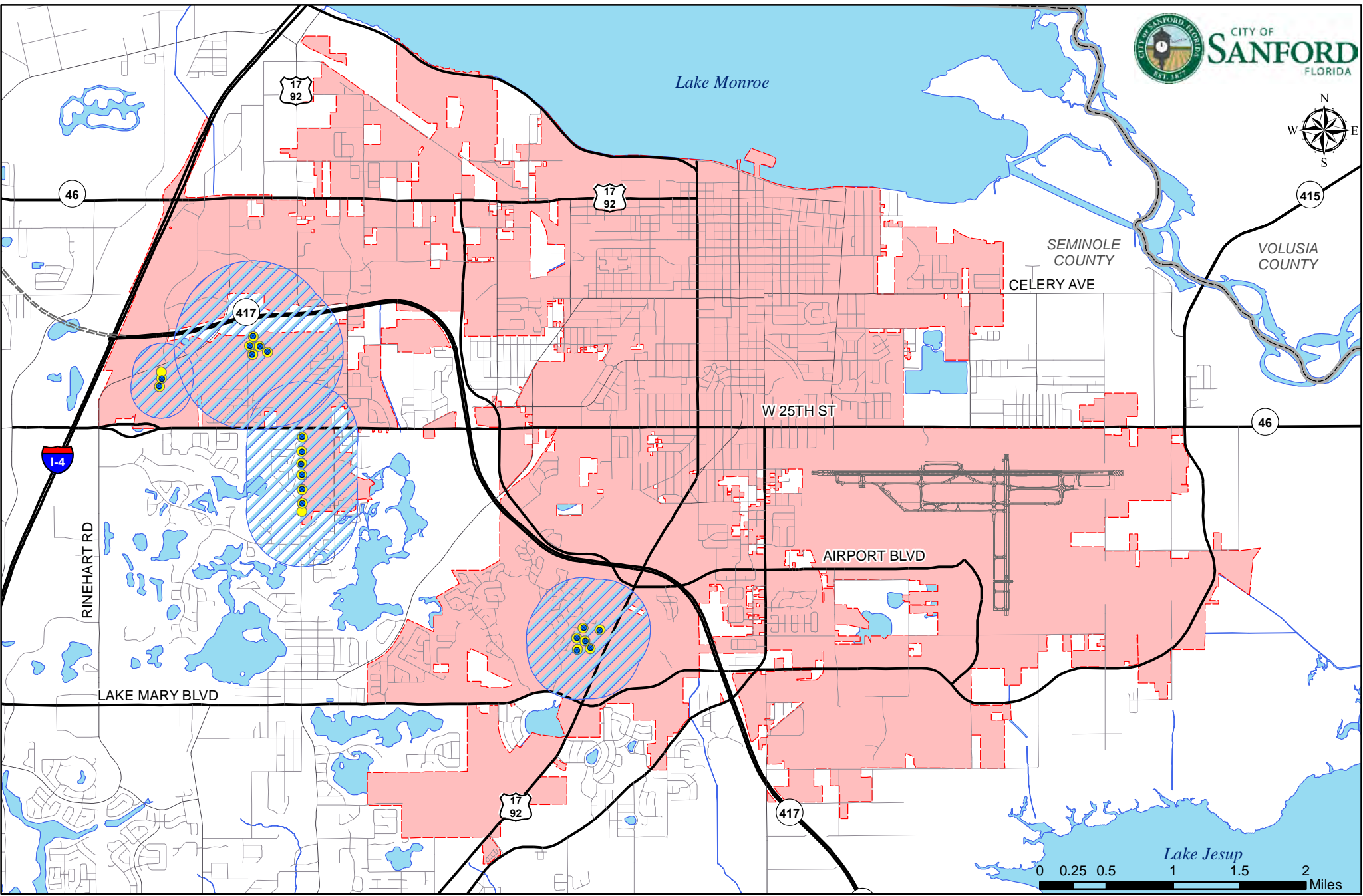


**Natural Resources**

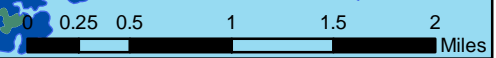
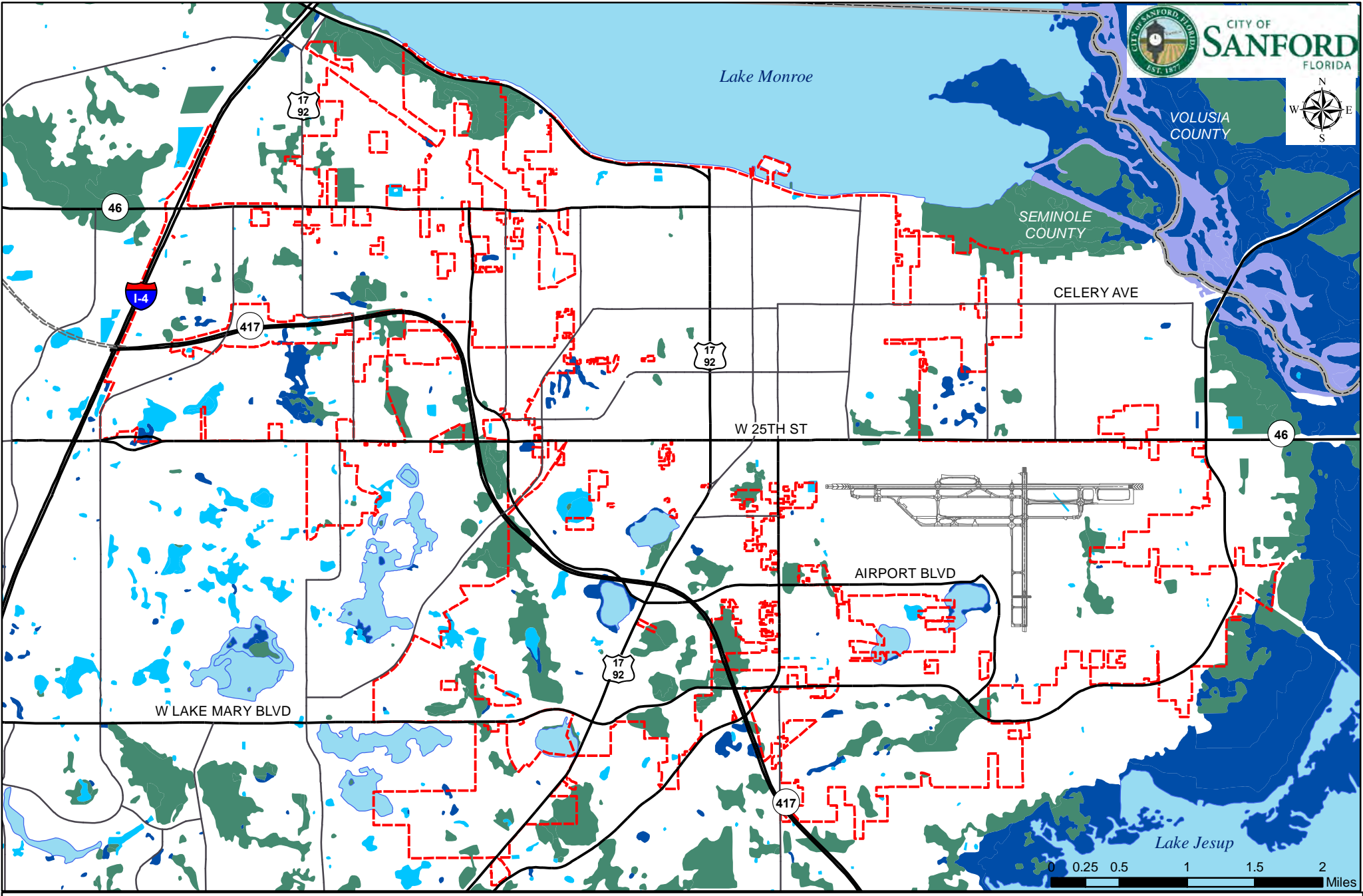
- MAP 9.        *Wellfield Protection, 2017*
- MAP 10.     *Wetlands, 2017*
- MAP 11.     *Lakes, Rivers and Canals, 2017*
- MAP 12.     *Soils, 2017*
- MAP 13.     *Floodplain, 2017*
- MAP 14.     *Vegetative Communities, 2017*
- MAP 15.     *Wildlife Habitat Area, 2017*












- Existing Wellheads
- County Boundary
- Primary Protection Zone
- Sanford City Limits
- ▨ Secondary Protection Zone

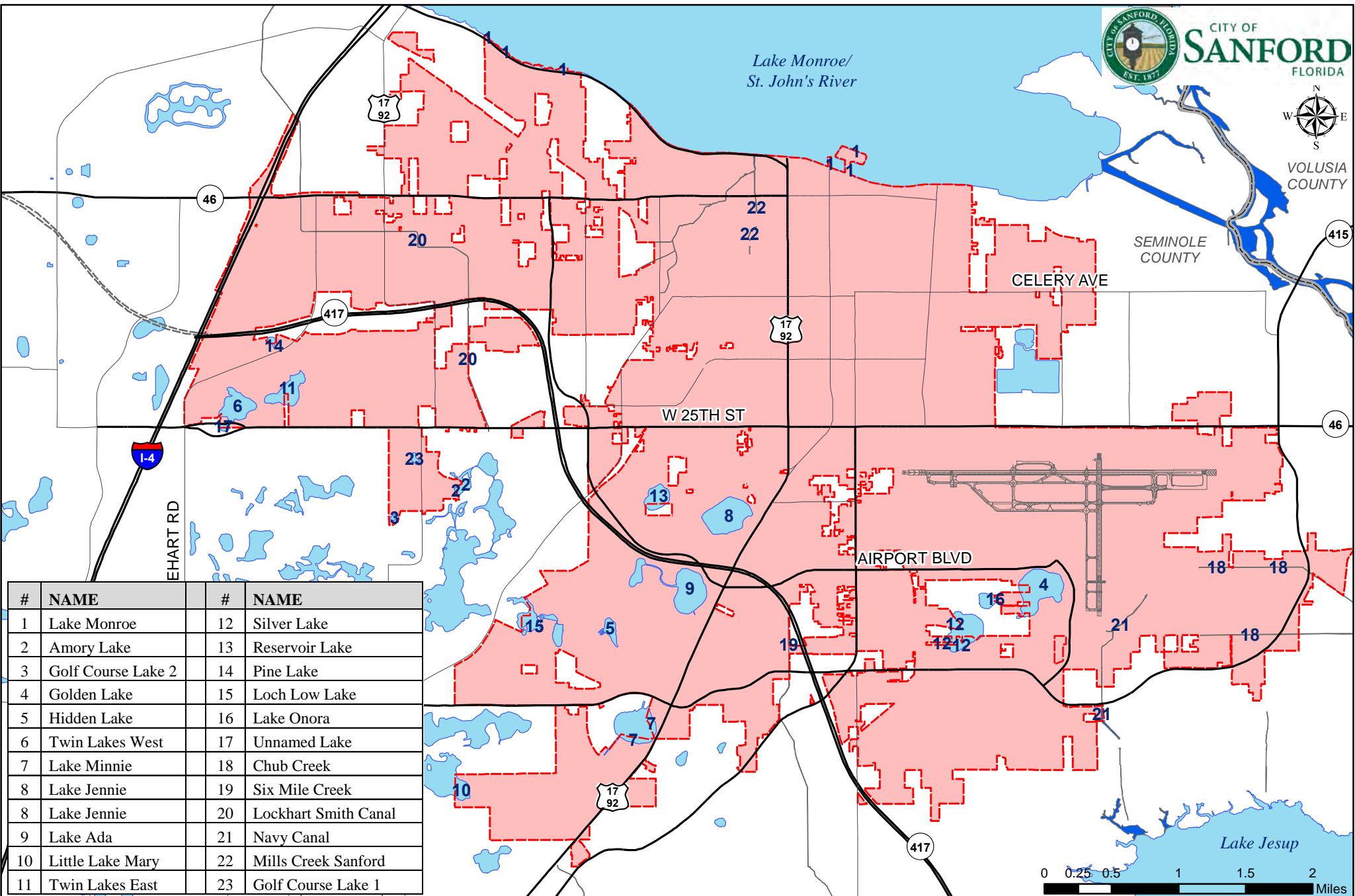
## Wellfield Locations & Protection Zones

### Map 9

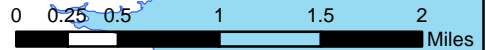


- |   |  |   |
|---|--|---|
|  Freshwater Emergent Wetland       |  Lake     |  Sanford City Limits           |
|  Freshwater Forested/Shrub Wetland |  Riverine |  County Boundary               |
|  Freshwater Pond                   |  Other    |  Orlando/Sanford Intl. Airport |





# Wetlands



#	NAME	#	NAME
1	Lake Monroe	12	Silver Lake
2	Amory Lake	13	Reservoir Lake
3	Golf Course Lake 2	14	Pine Lake
4	Golden Lake	15	Loch Low Lake
5	Hidden Lake	16	Lake Onora
6	Twin Lakes West	17	Unnamed Lake
7	Lake Minnie	18	Chub Creek
8	Lake Jennie	19	Six Mile Creek
8	Lake Jennie	20	Lockhart Smith Canal
9	Lake Ada	21	Navy Canal
10	Little Lake Mary	22	Mills Creek Sanford
11	Twin Lakes East	23	Golf Course Lake 1

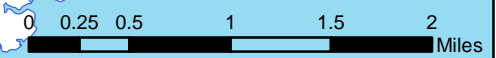
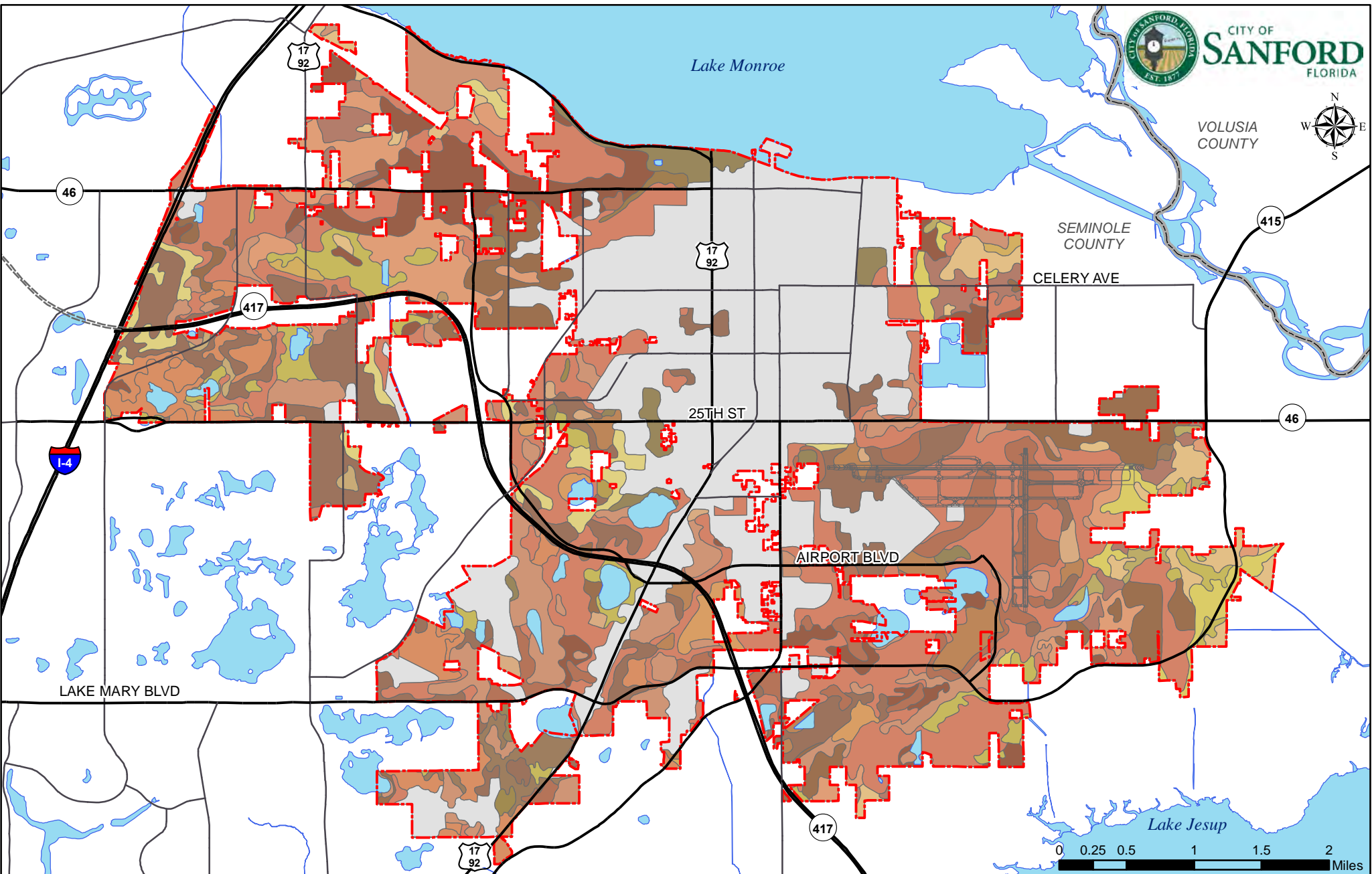


Note: Lake Monroe is considered part of the St. John's River

-  Lake
-  Sanford City Limits
-  River
-  County Boundary

# Lakes, Rivers and Streams

## Map 11

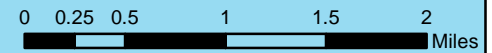
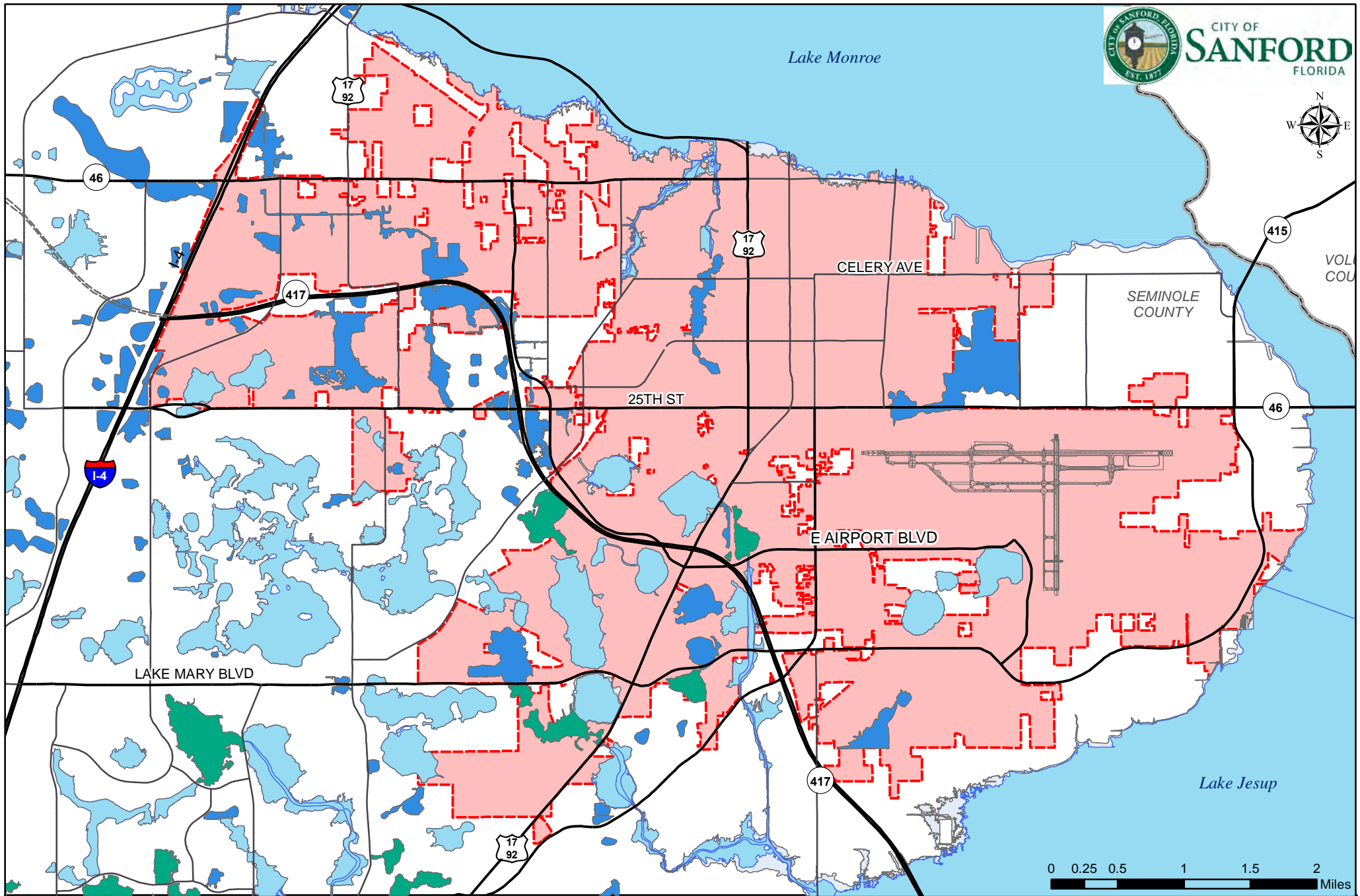


County Boundary	Eaugallie and Immokalee Fine Sands	Adamsville-Sparr Fine Sands	Pomello Fine Sand	Tavares-Millhopper Fine Sands
City Limits	Felda and Manatee Mucky Fine Sands - Depressional	Myakka and Eaugallie Fine Sands	Pompano Fine Sand	Urban Land
Basinger, Samsula, and Hontoon Soils - Depressional	Immokalee Sand	Nittaw Mucky Fine Sand - Depressional	St. Johns and Eaugallie Fine Sands	Wabasso Fine Sand
Basinger and Smyrna Fine Sands - Depressional	Brighton, Samsula, and Sanibel Mucks	Paola-St. Lucie Sands	Arents	Astatula-Apopka Fine Sands
Canova and Terra Ceia Mucks	Malabar Fine Sand	Pineda Fine Sand	Seffner Fine Sand	Basinger and Delray Fine Sands
	Manatee, Florida, and Holopaw Soils	Udorthents, Excavated	Tavares-Millhopper Complex	Water

# Soils Map

## Map 12





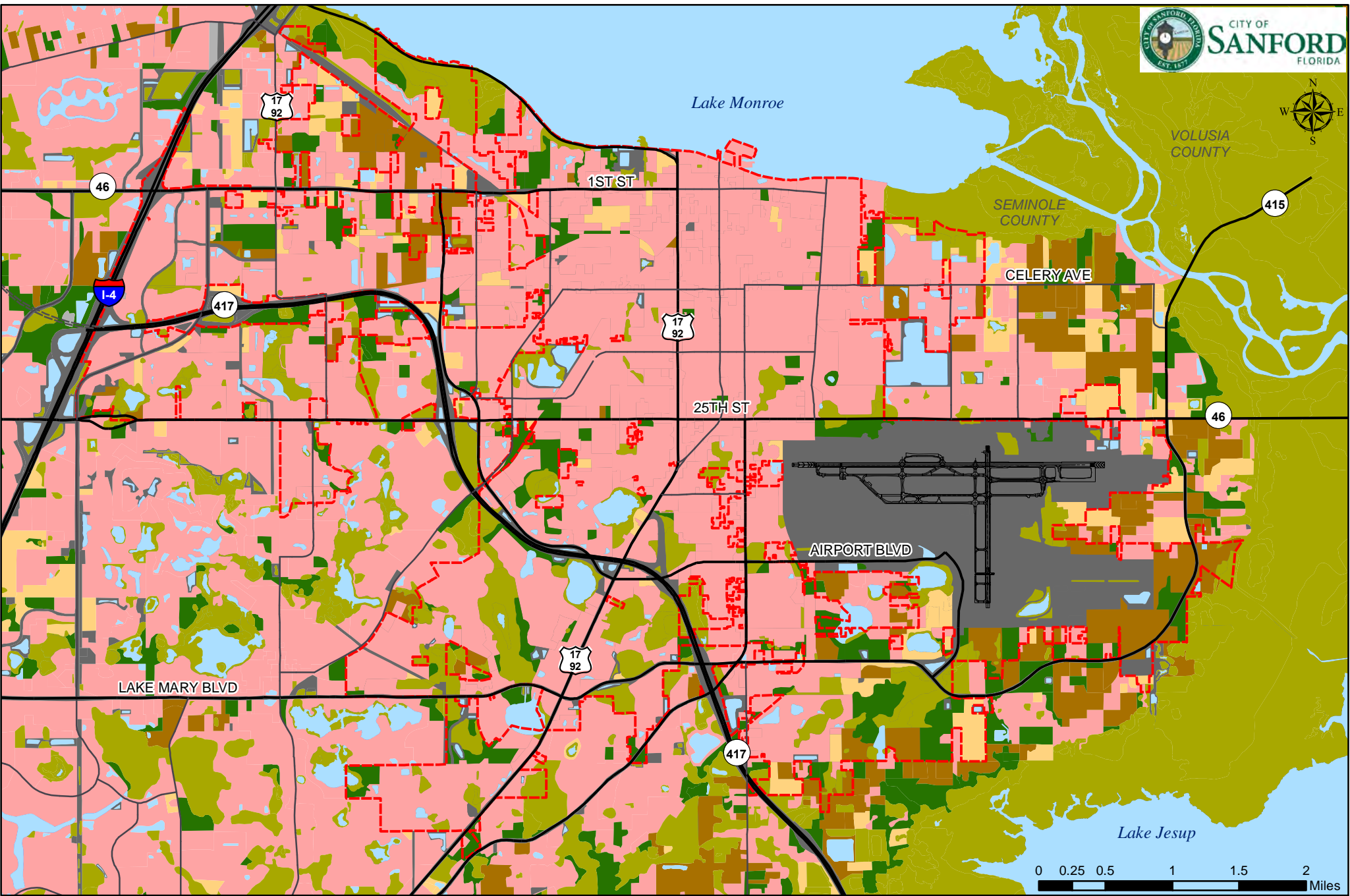
- FEMA Flood Zone
- Zone A
- Zone AH
- Sanford City Limits
- Zone AE
- Zone X
- County Boundary
- 0.2% Annual Chance Flood Hazard

# Sanford Floodplain Map

Map 13

Note: This map contains a GIS representation of the FEMA Flood Zone designations. For more detailed floodplain maps, please refer to the FEMA Flood Map Service Center.

Source: FEMA Flood Insurance Rate Map (FIRM), 2007

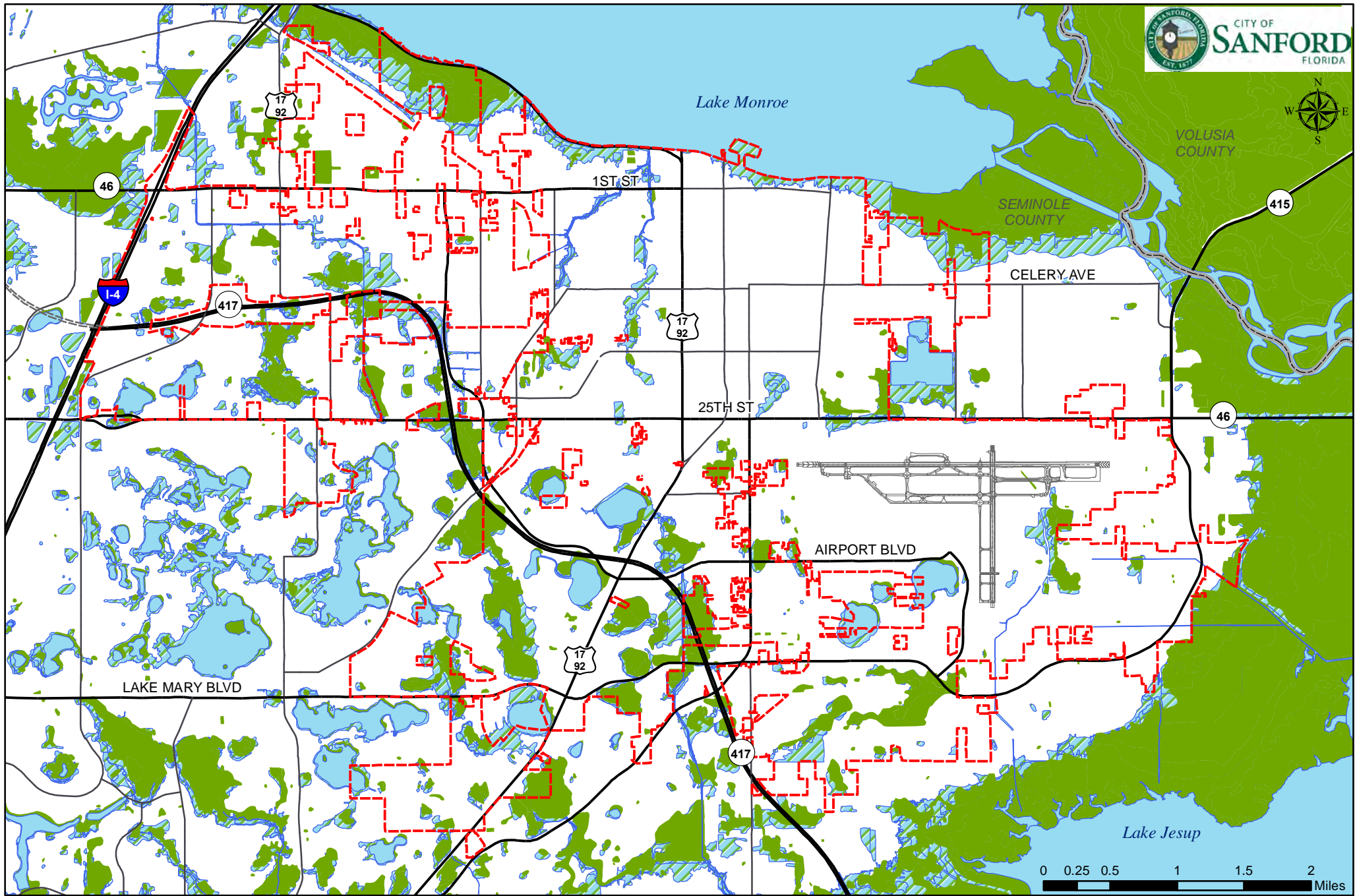


**Land Use Cover Classification**

- |   |             |   |  |   |                     |
|---|-------------|---|--|---|---------------------|
|   | Urban       |  | Upland nonforested                       |    | Wetland             |
|   | Agriculture |  | Forest                                   |    | Barren land         |
|  | Water       |  | Transportation, Communication, Utilities |  | County Boundary     |
|   |             |   |  |  | Sanford City Limits |

**Vegetative Communities**

**Map 14**



- Wetlands
- Environmentally Sensitive Lands
- Sanford City Limits
- County Boundary

# Wildlife Habitat Areas

Map 15

Source: Seminole County